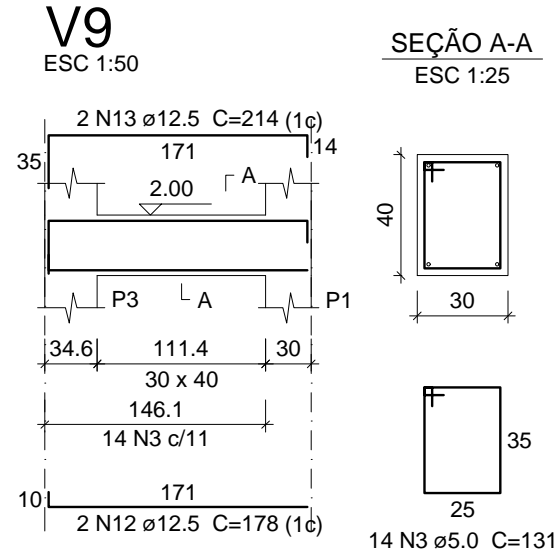
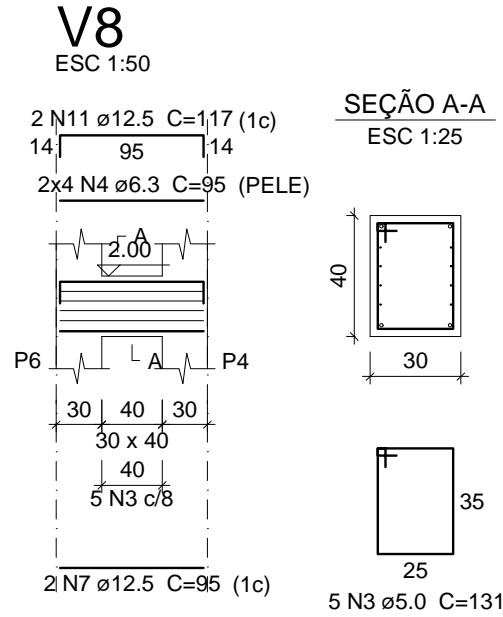
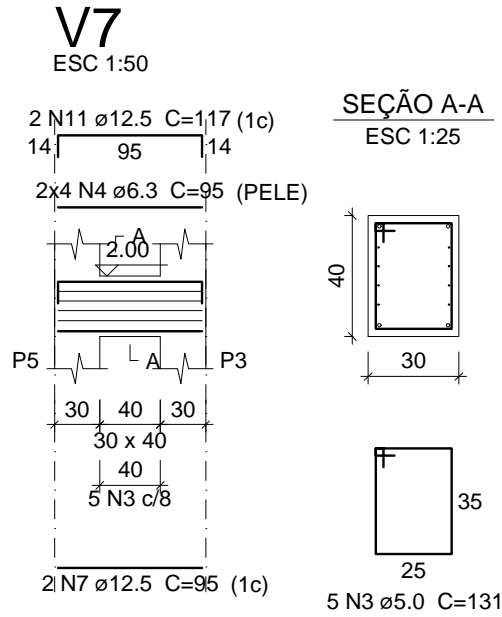
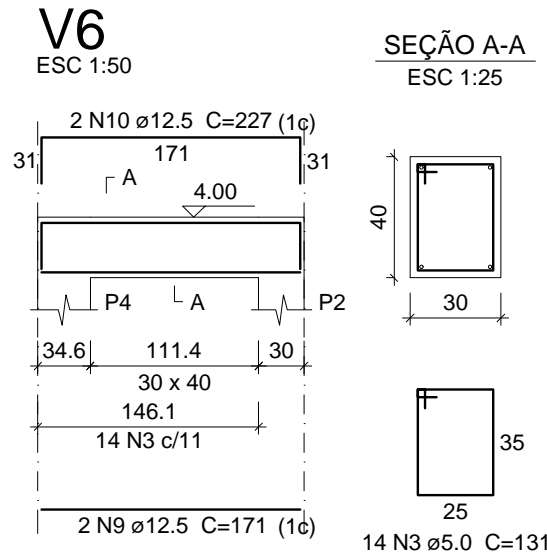
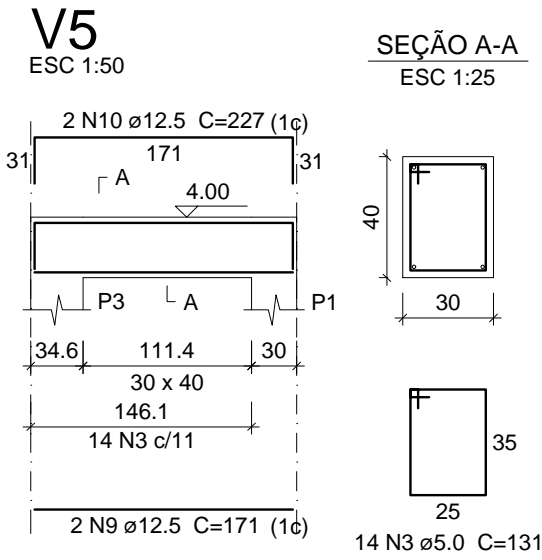
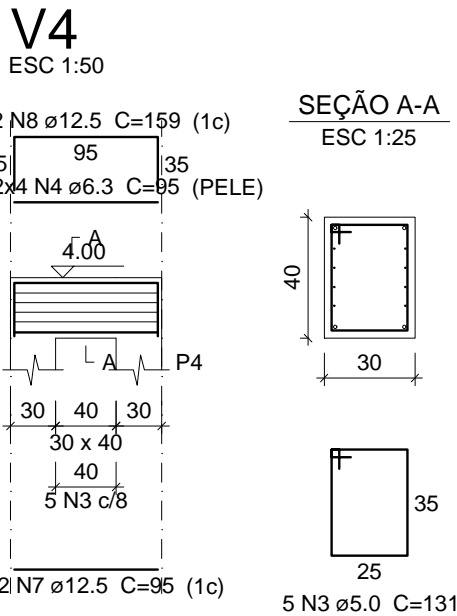


Relação do aço

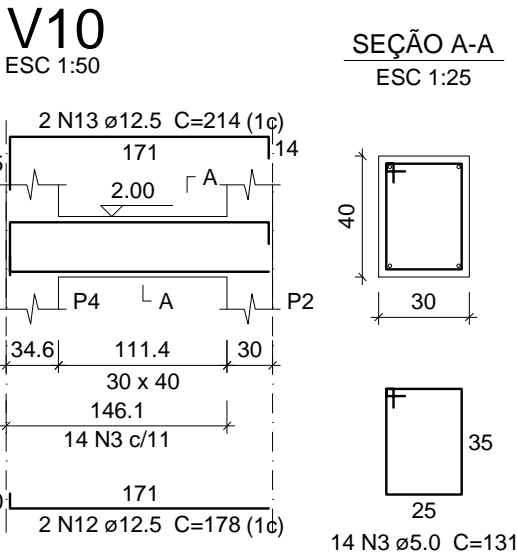
AÇO	N	DIAM (mm)	QUANT	C.UNIT (cm)	C.TOTAL (cm)
CA60	1	5.0	68	251	17068
	2	5.0	68	191	12988
	3	5.0	76	131	9956
	4	6.3	32	95	3040
CA50	5	8.0	22	795	17490
	6	12.5	8	865	6920
	7	12.5	8	95	760
	8	12.5	4	159	636
	9	12.5	4	171	684
	10	12.5	4	227	908
	11	12.5	4	117	468
	12	12.5	4	178	712
	13	12.5	4	214	856
	14	16.0	7	795	5565



Resumo do aço

AÇO	DIAM (mm)	C.TOTAL (m)	PESO + 10 % (kg)
CA50	6.3	60.8	16.4
	8.0	349.8	151.8
	12.5	239	253.2
	16.0	111.4	193.2
CA60	5.0	800.4	135.6
PESO TOTAL (kg)			
CA50		614.6	
CA60		135.6	

Volume de concreto (C-30) = 9.26 m³
Área de forma = 68.3 m²



	TÍTULO:	PROJETO PAVIMENTAÇÃO VIGAS DE BALDRAME Estrada Schmidt Fundos		PRANCHA:	ET-5
	CLIENTE:	MUNICÍPIO DE WESTFÁLIA		OBRA:	Projeto de pavimentação asfáltica, drenagem e sinalização
				LOCAL:	Estrada Schmidt Fundos Westfália/RS
RESPONSÁVEL TÉCNICO:	ÁREA TOTAL:		ESCALA:		1/50
	1.572,00 m²		DATA:		janeiro/2025
Eng. Civil Fernando Battisti CREA/RS 230.439					